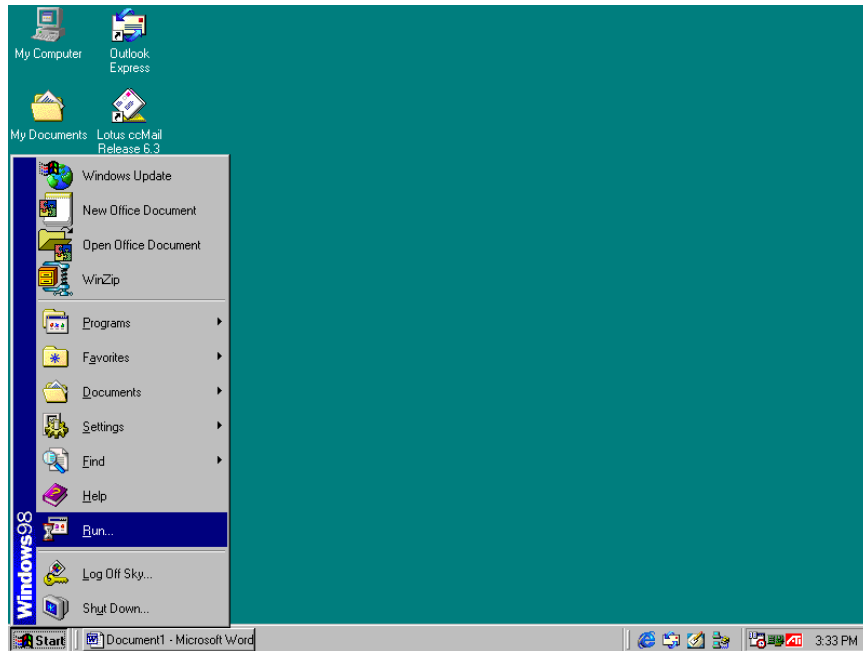
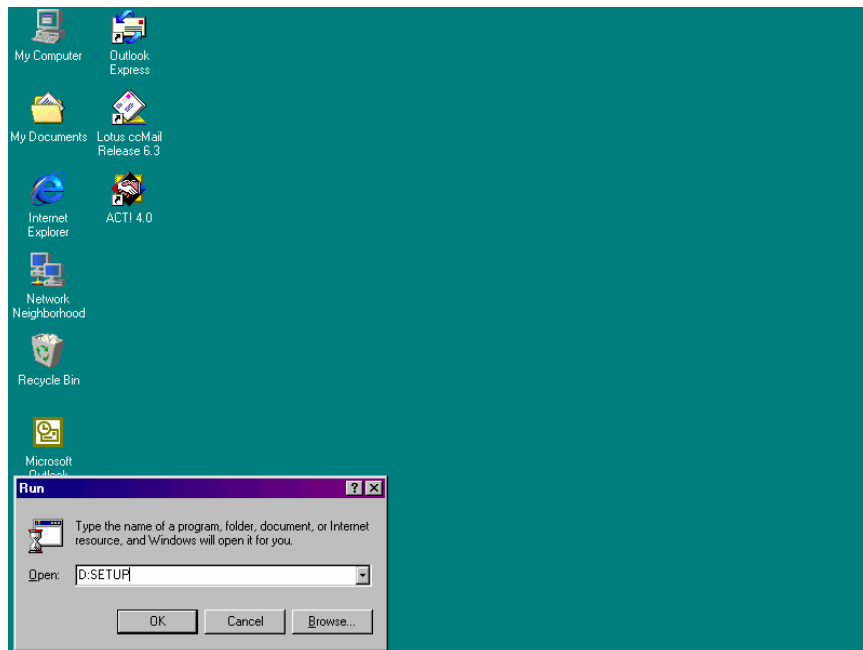


Installation

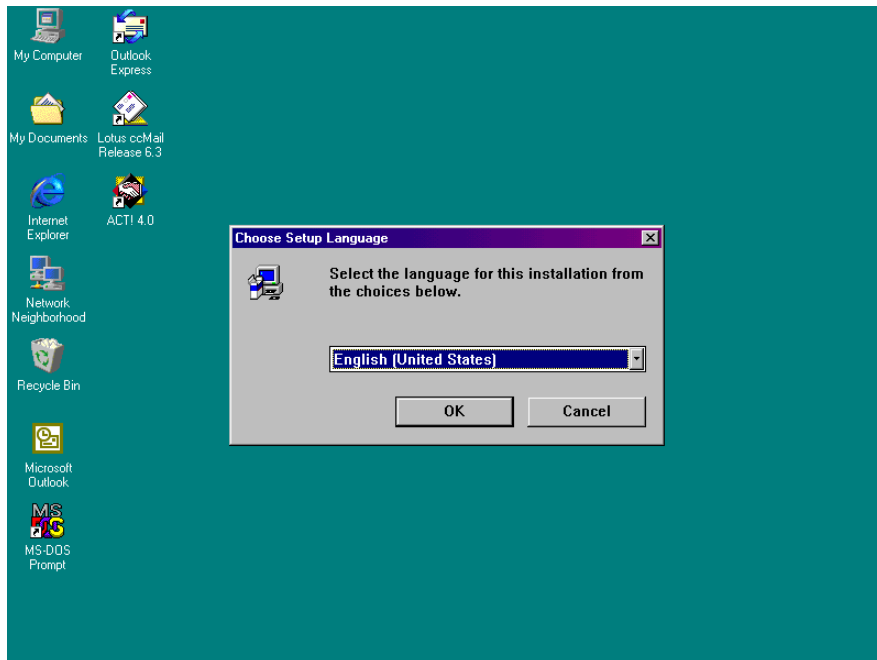
1 Installing Progression Explorer



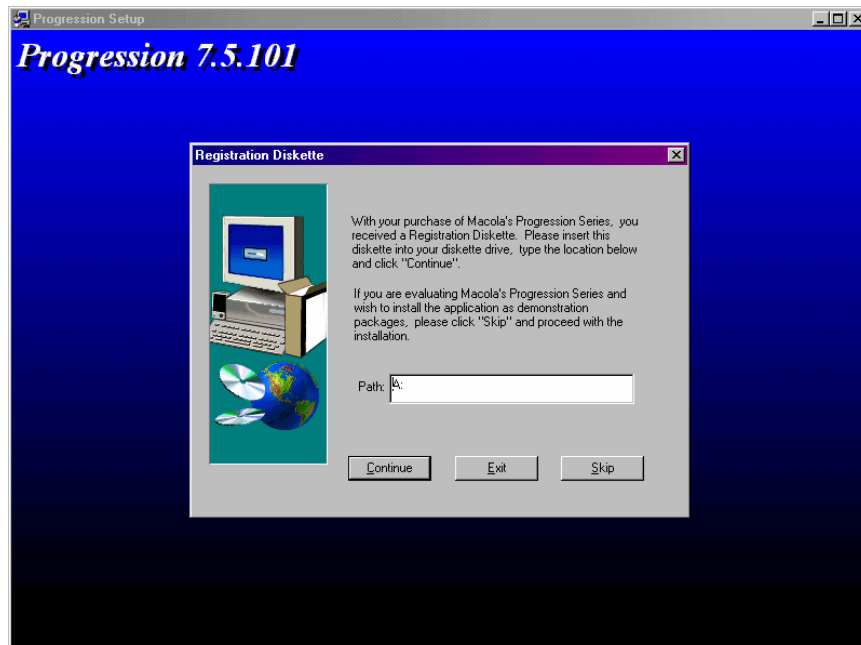
Start Windows
Click Start Button, Run.



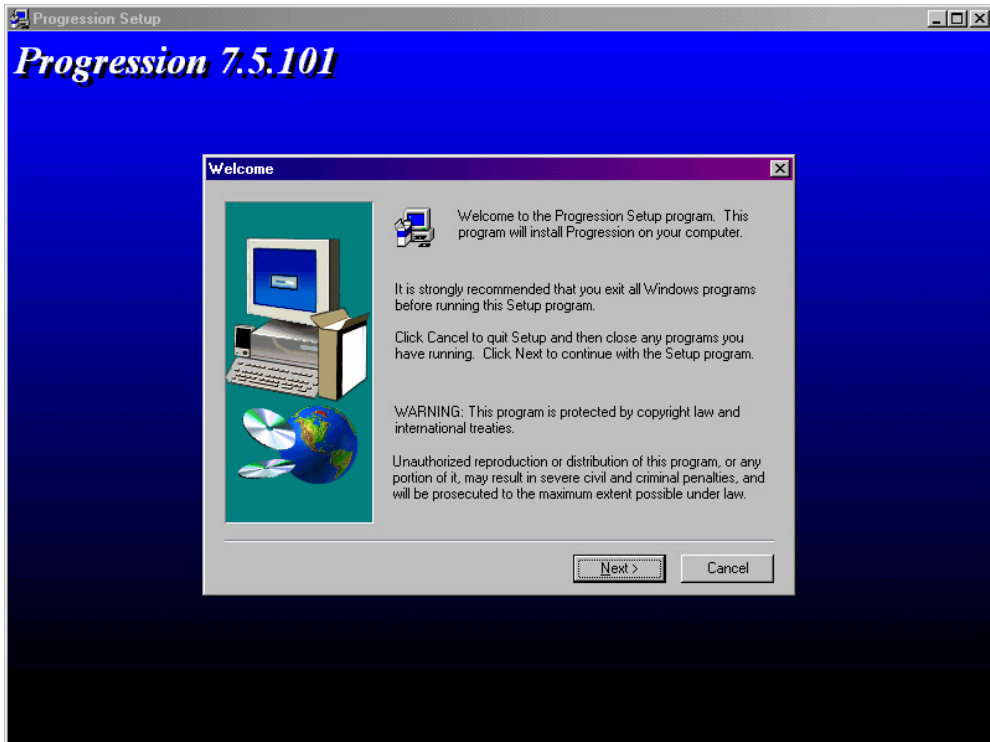
In the open dialogue box type
x:setup(where X is the drive letter of your CD ROM Drive



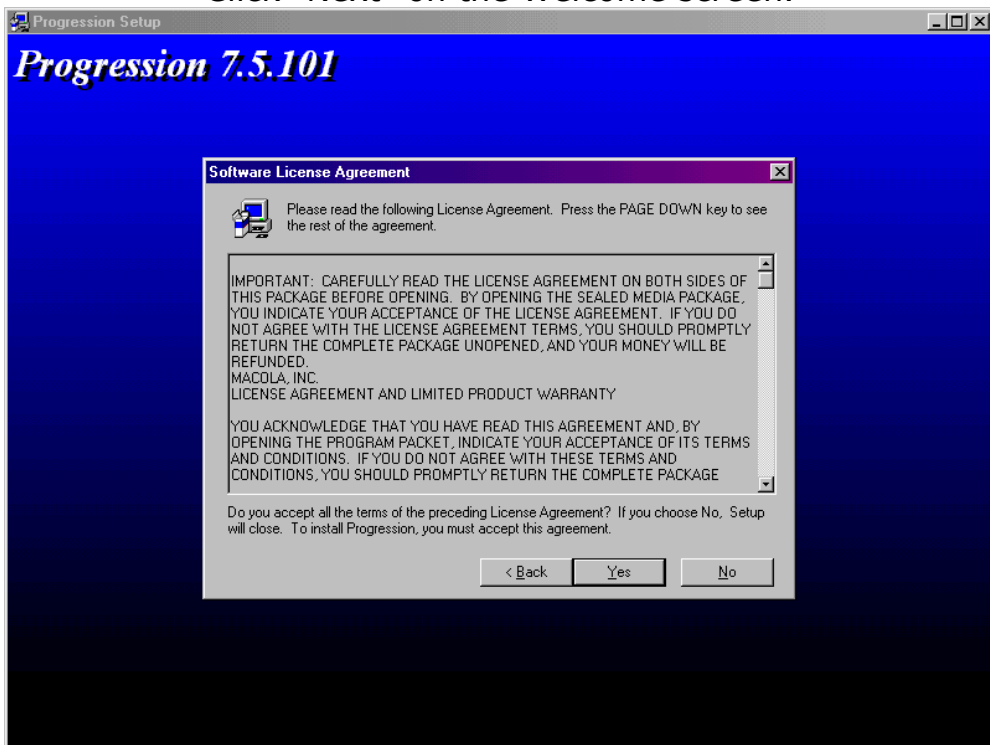
Click "OK" on the Choose Setup Language screen.



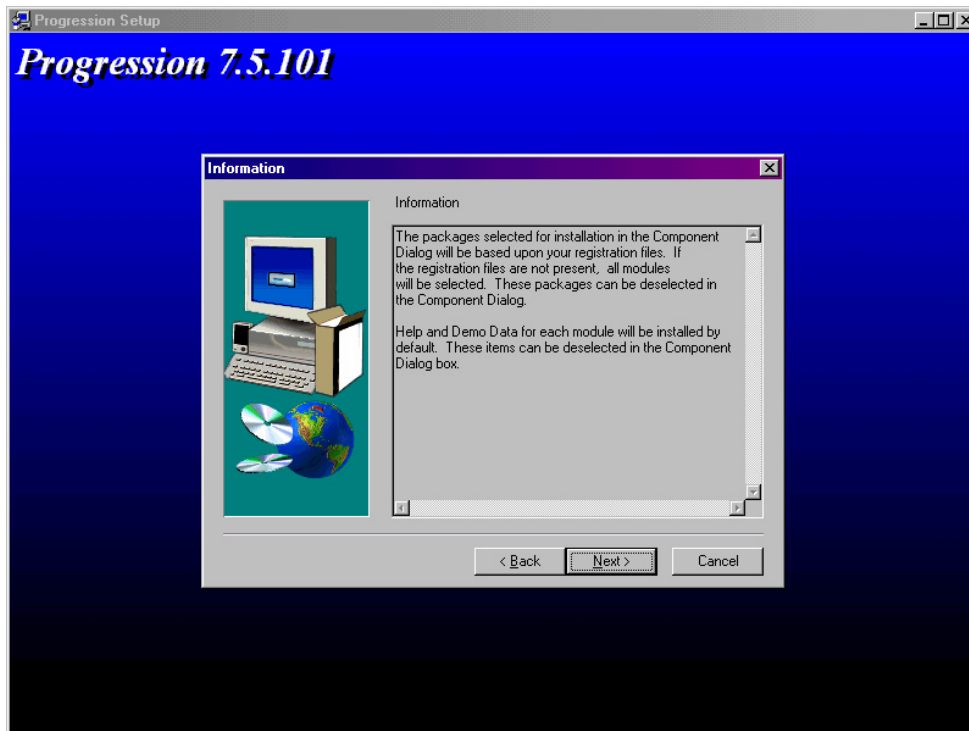
Click "Skip" on the Registration Diskette screen.



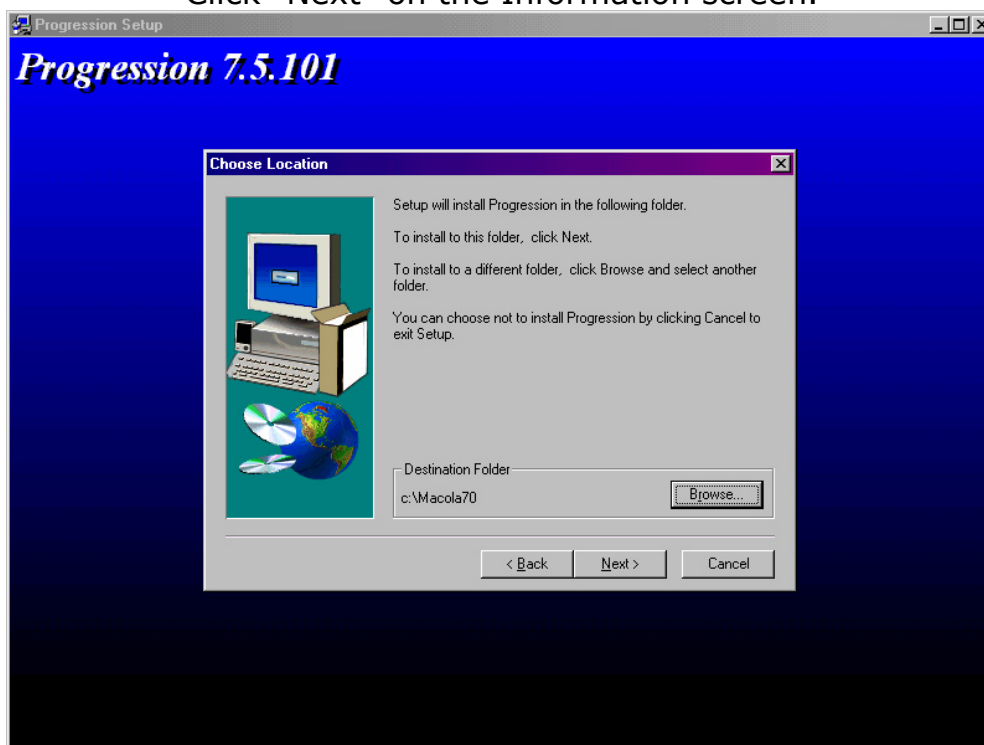
Click "Next" on the Welcome screen.



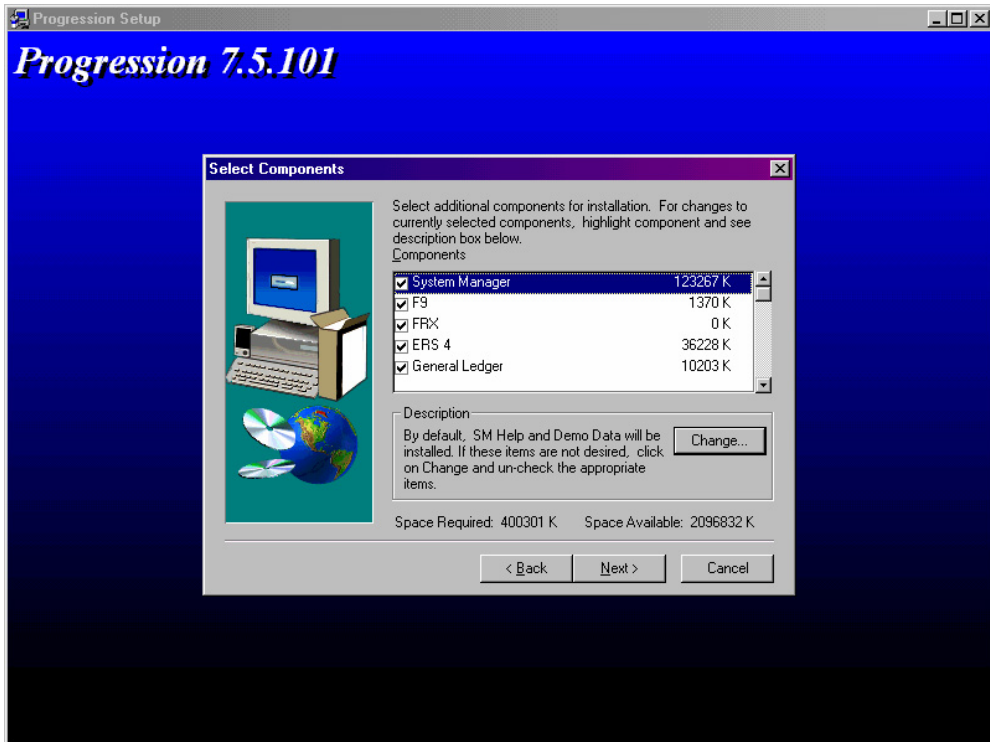
Click "Yes" on the Software License Agreement screen.



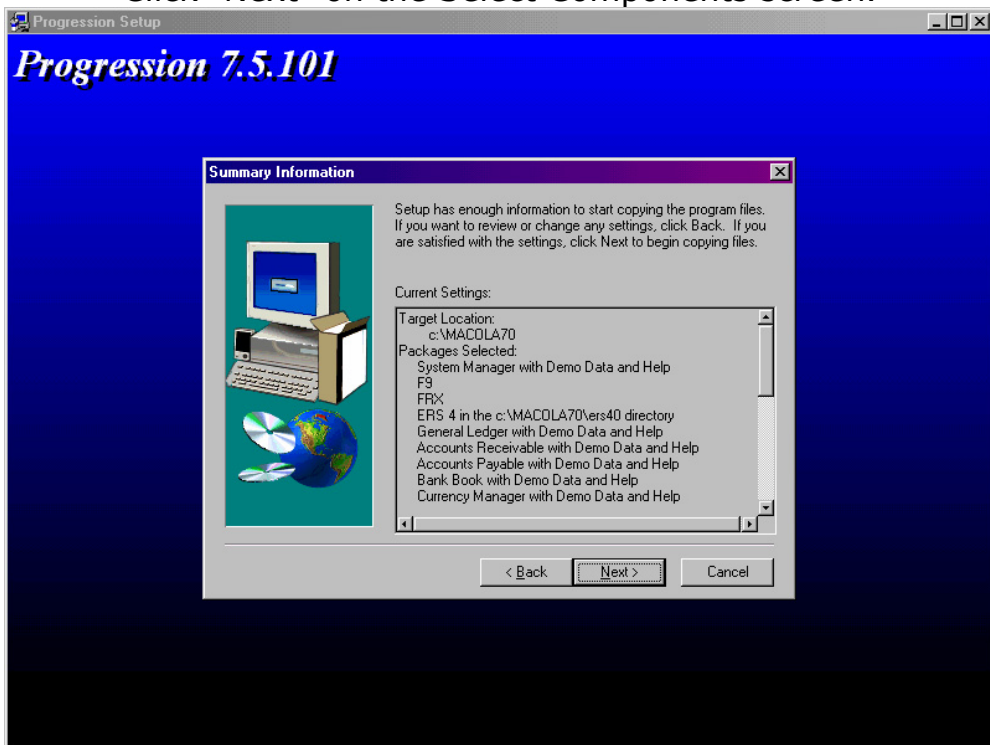
Click "Next" on the Information screen.



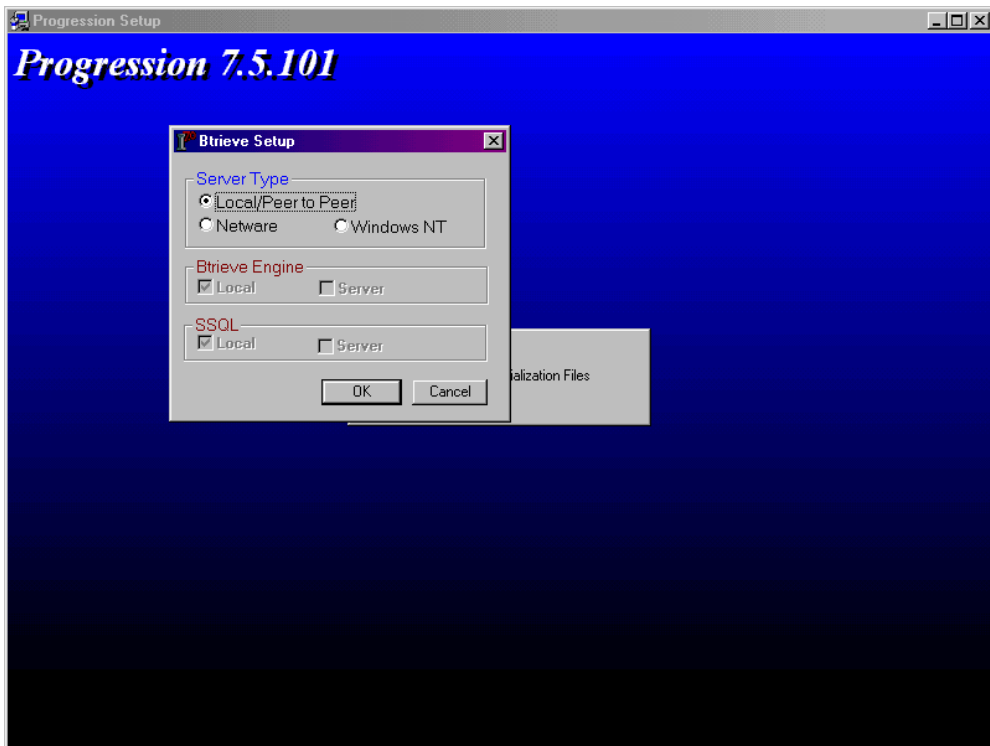
Click "Next" on the Choose Location screen, or change installation location then click "Next".



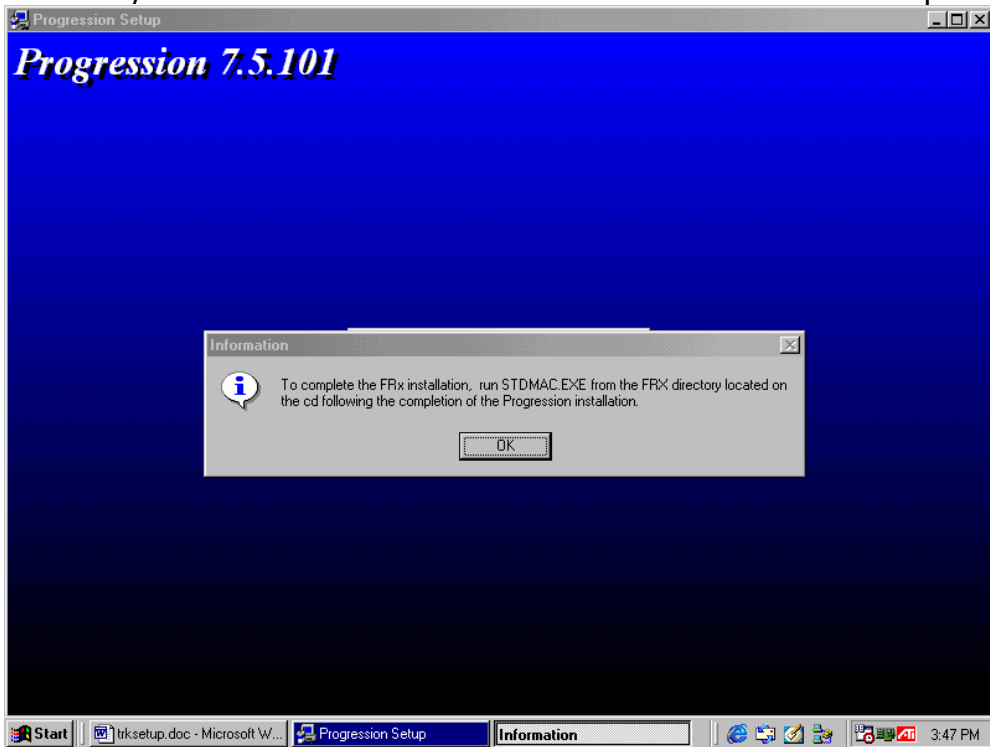
Click "Next" on the Select Components screen.



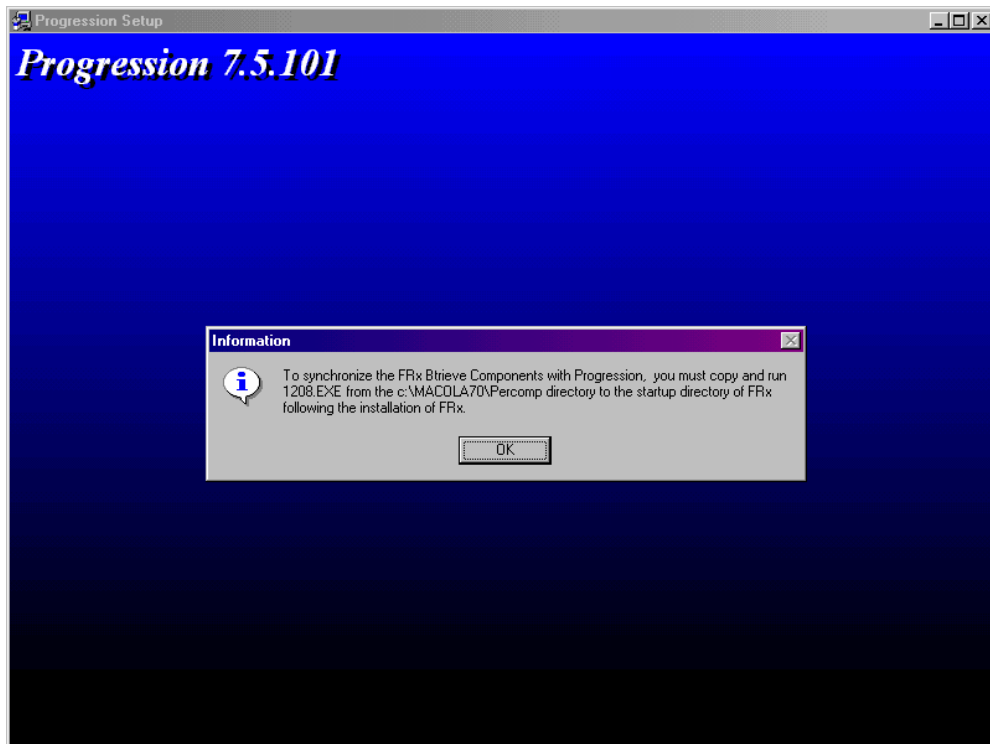
Click "Next" on the Summary Information screen.



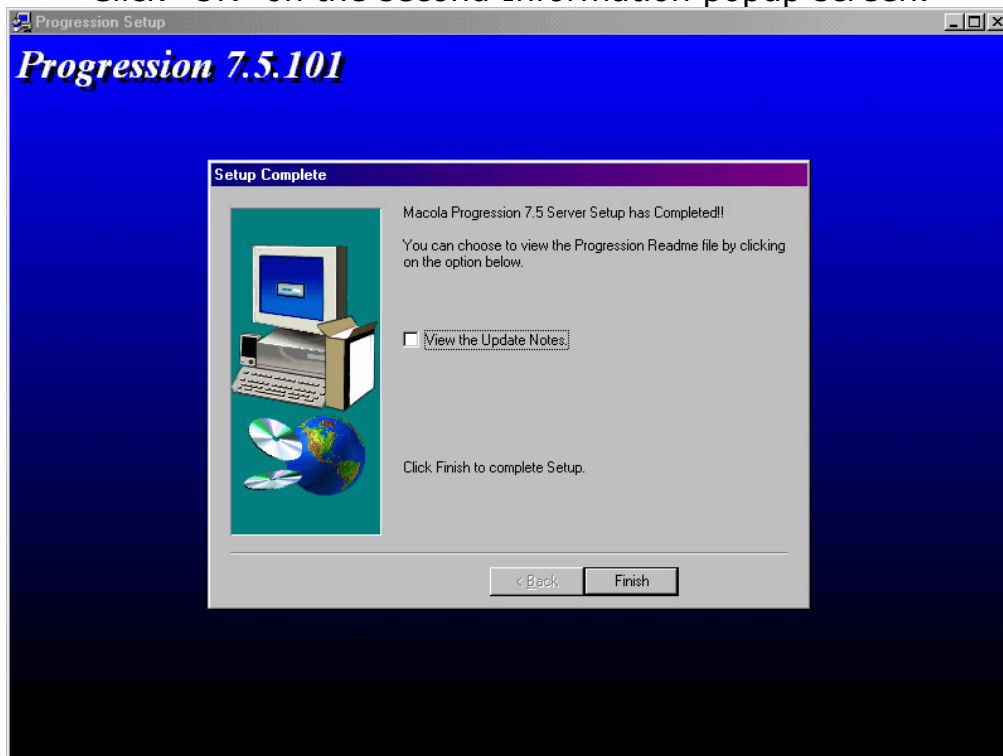
Check "Local/Peer to Peer" and click "OK" on the Btrieve Setup screen.



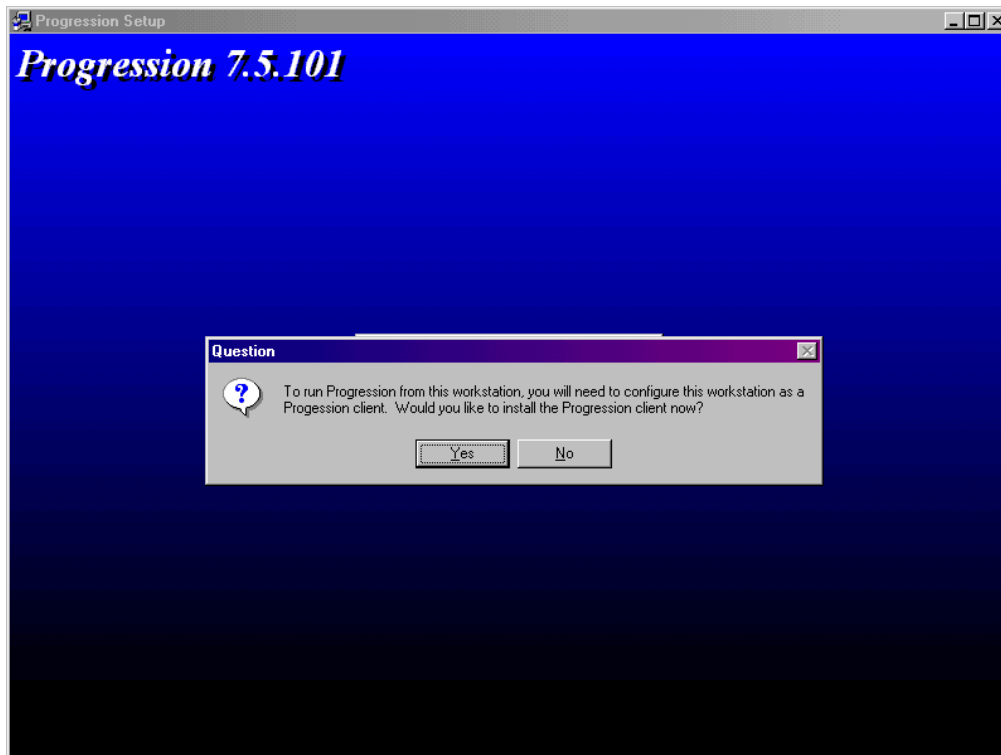
Click "OK" on the first Information popup screen.



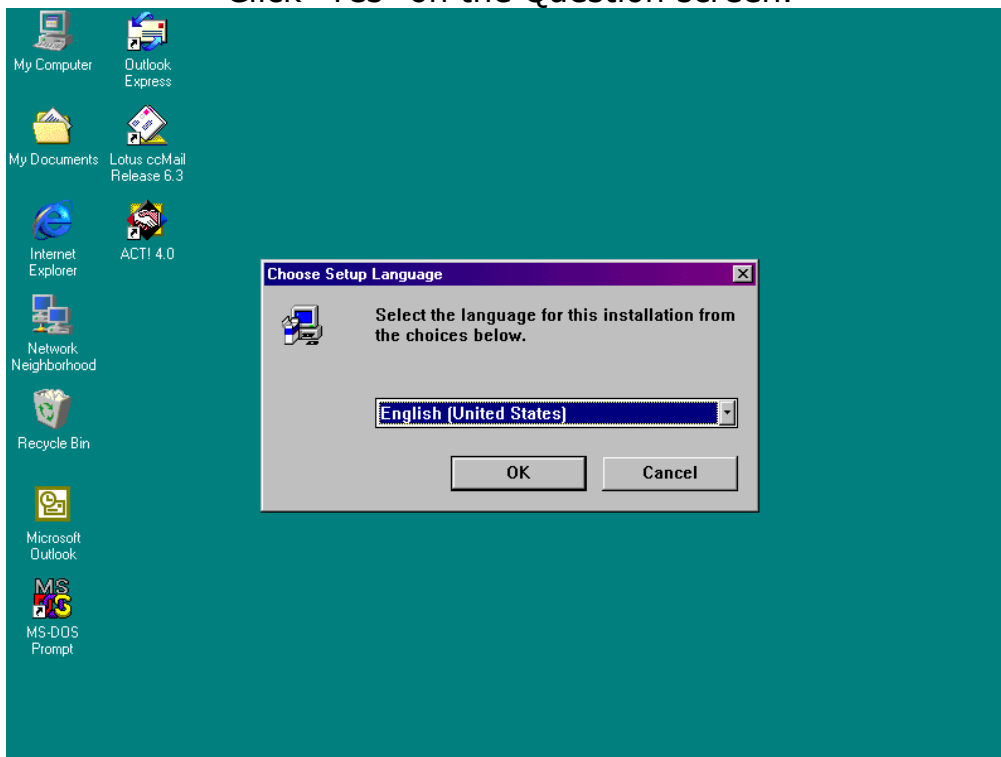
Click "OK" on the second Information popup screen.



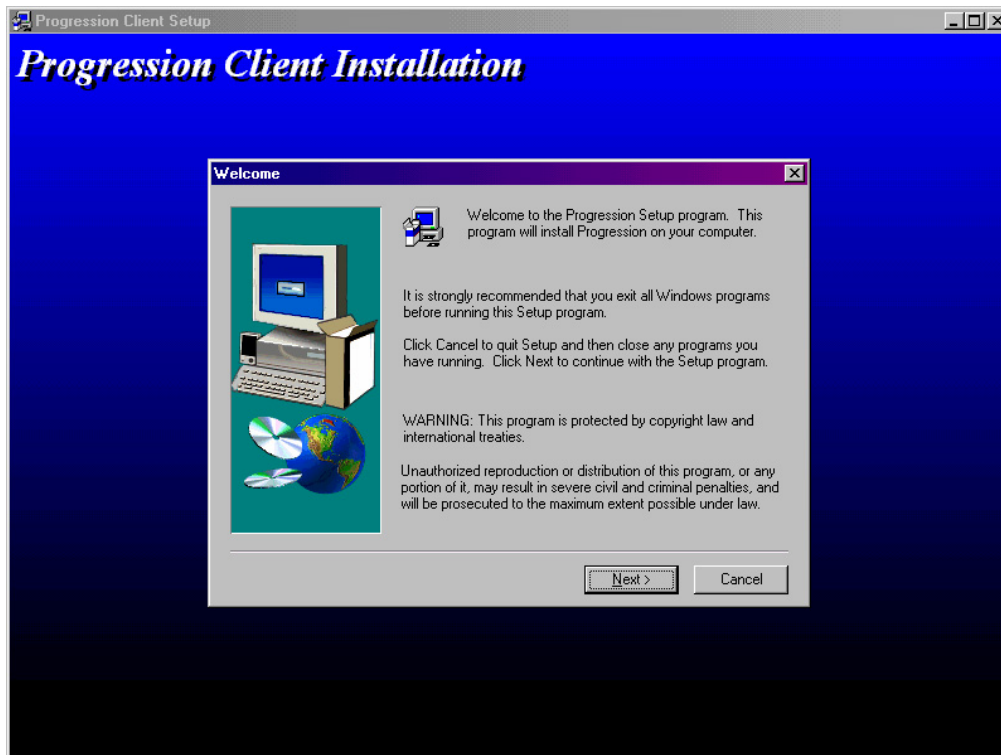
Click "Finish" on the Setup Complete screen.



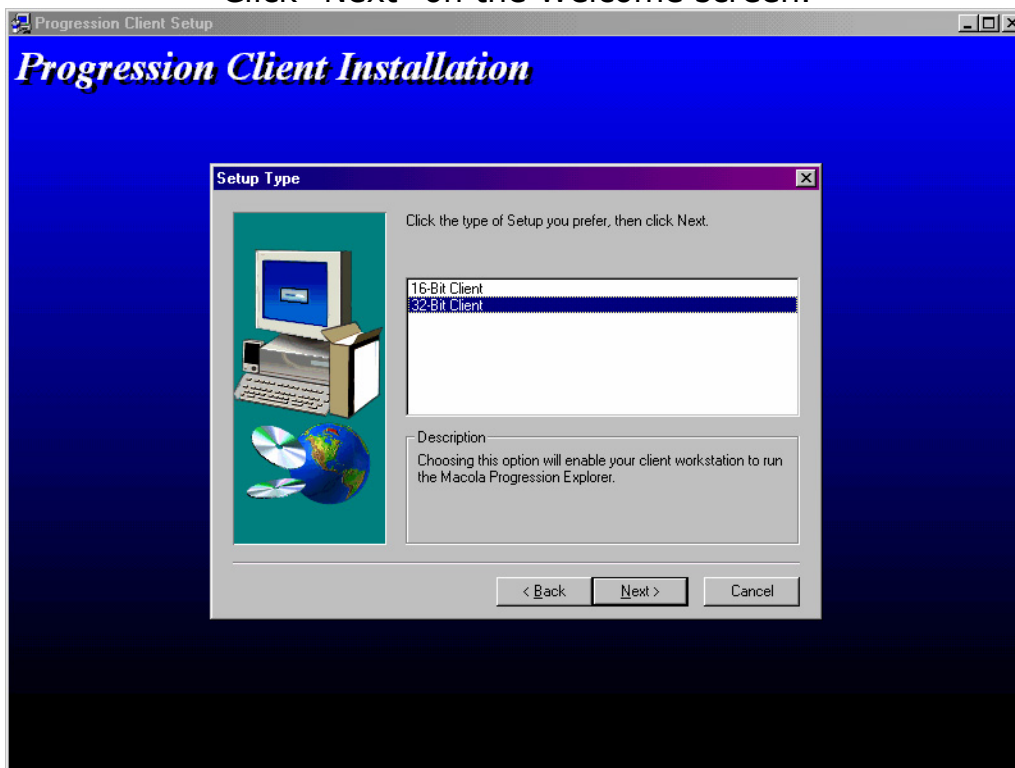
Click "Yes" on the Question screen.



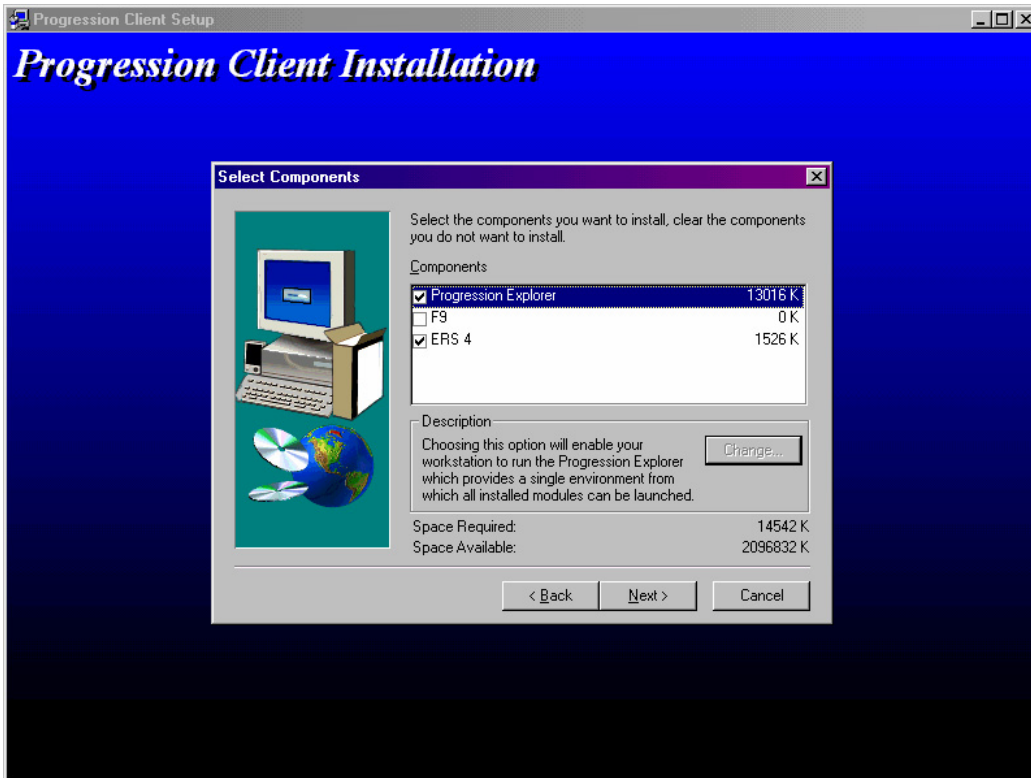
Click "OK" on the Choose Setup Language screen.



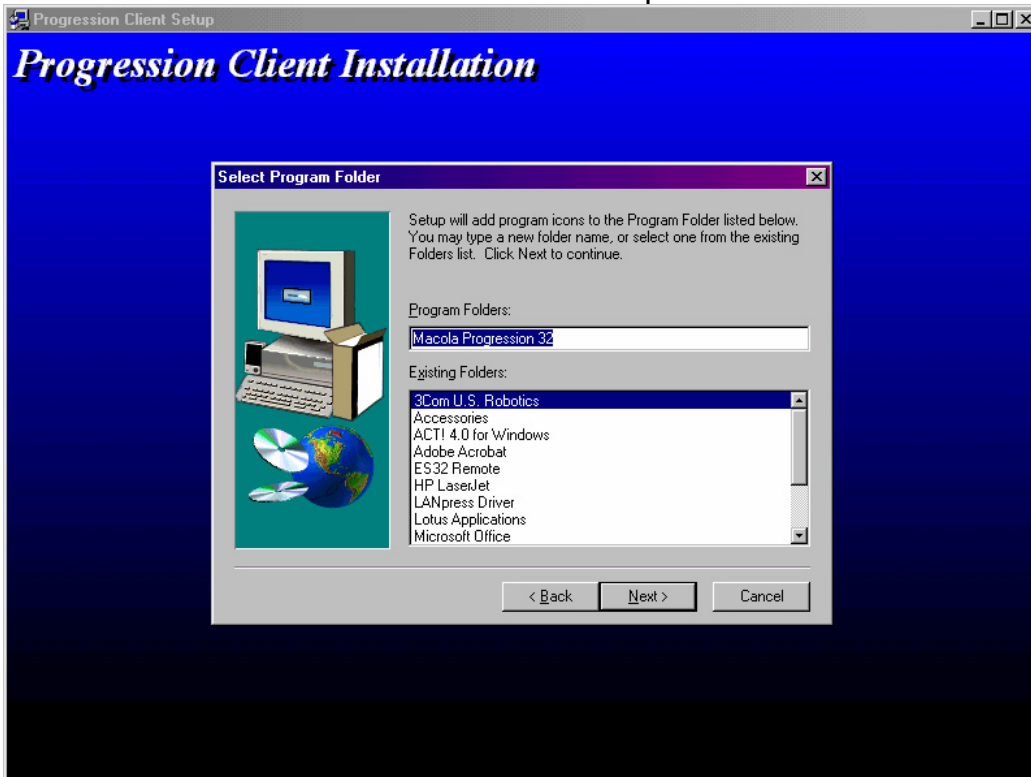
Click "Next" on the Welcome screen.



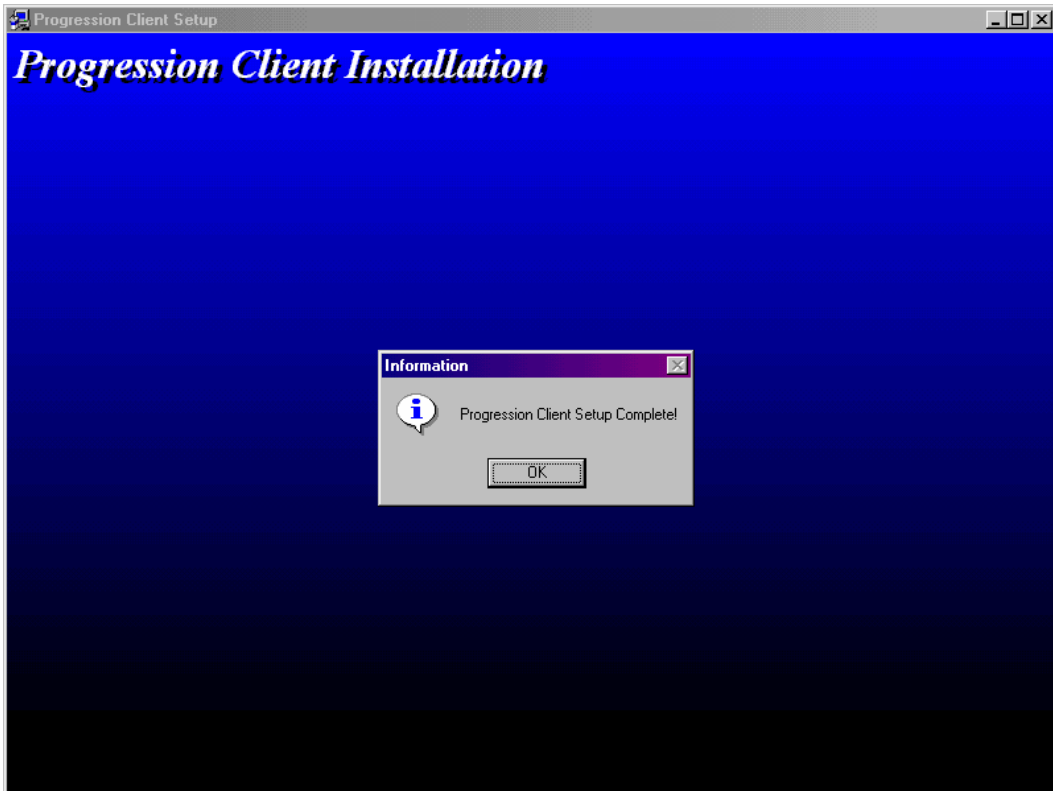
Check 32-Bit Client the click "Next" on the Setup type screen.



Click "Next" on the Select Components screen.

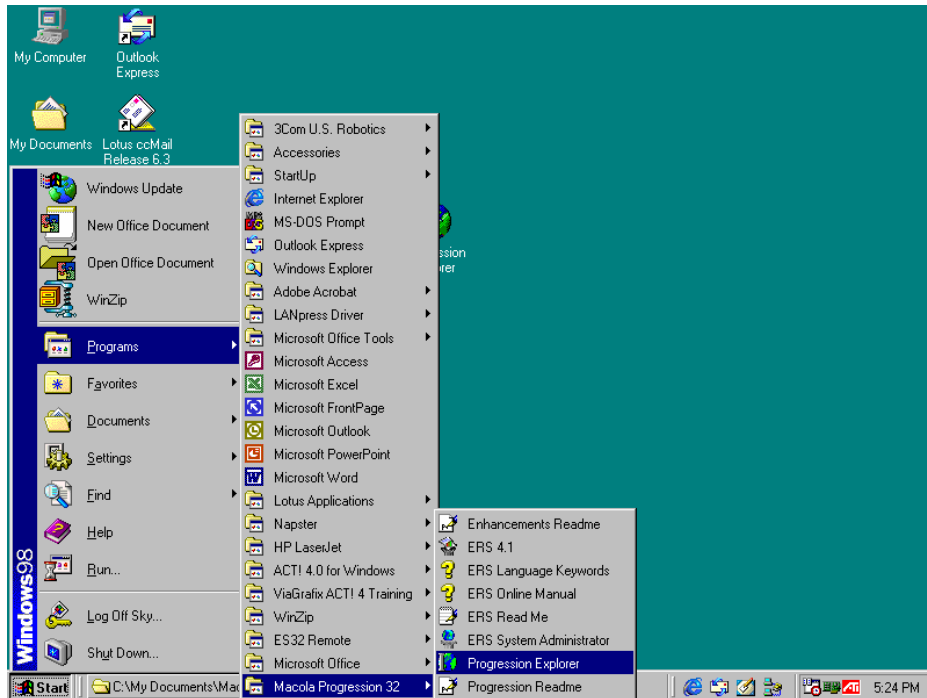


Click "Next" on the Select Program Folder screen.

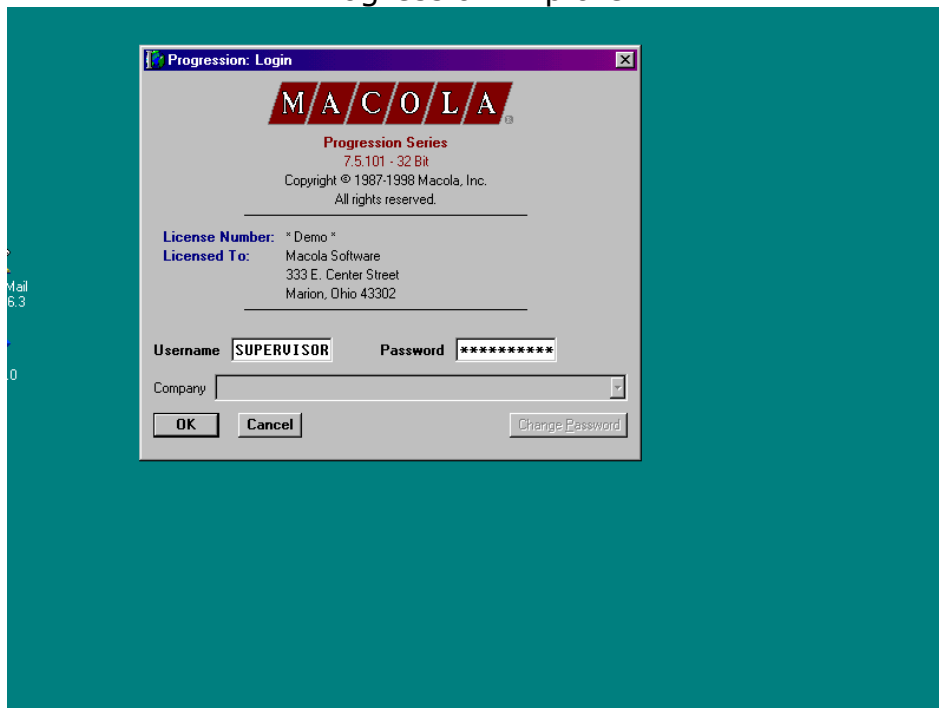


Click "OK" on the Information screen.

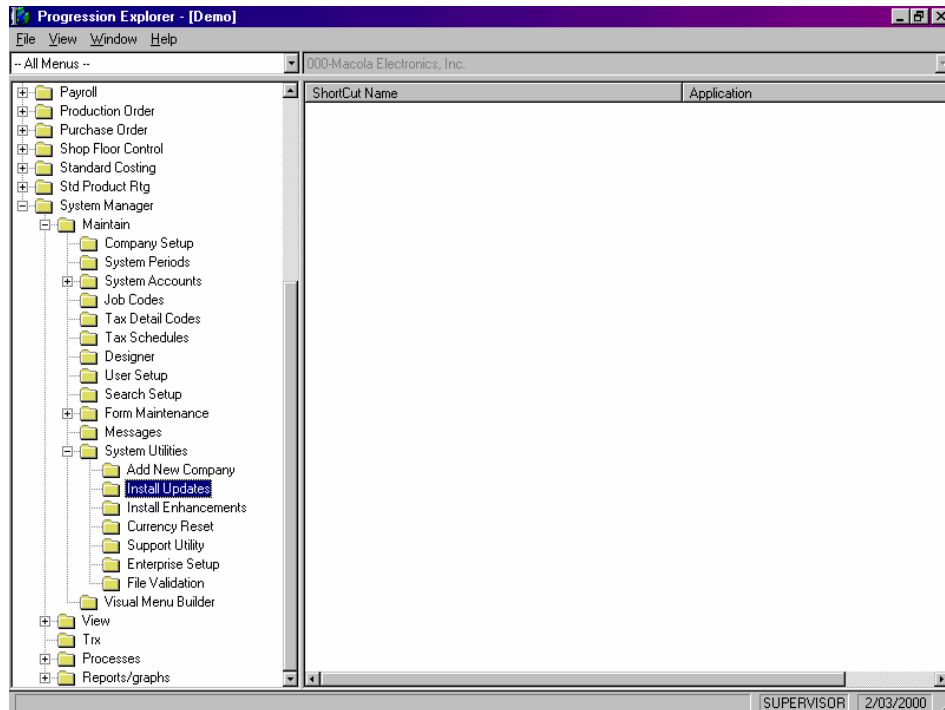
2. Update Trakwear Enhancement



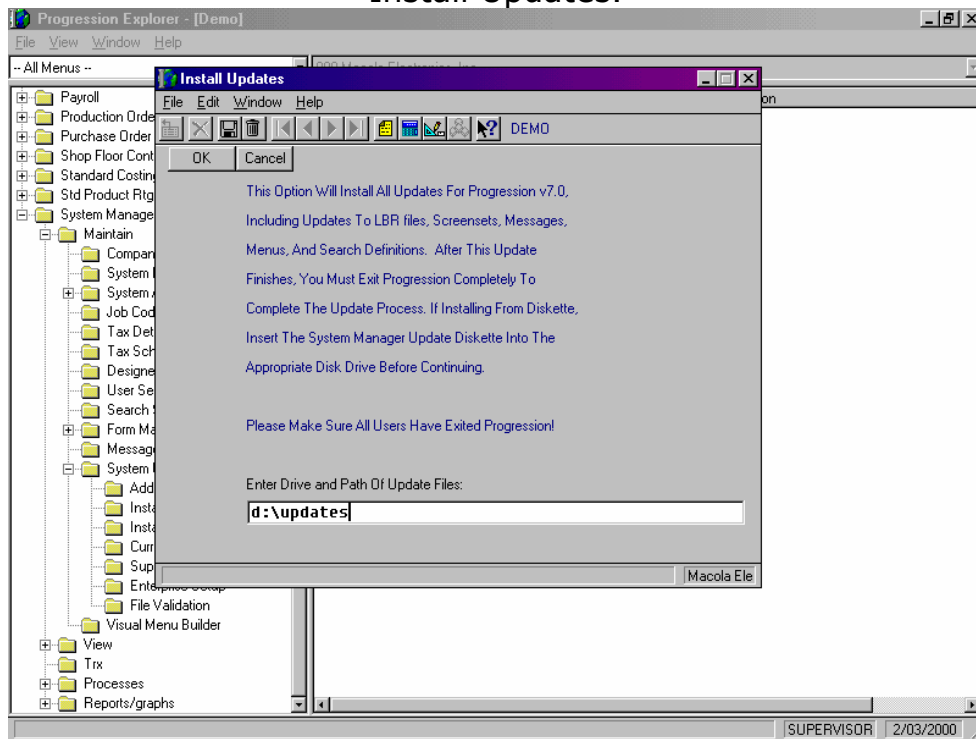
Click Start Button, go to Programs, Macola Progression32, and click on Progression Explorer.



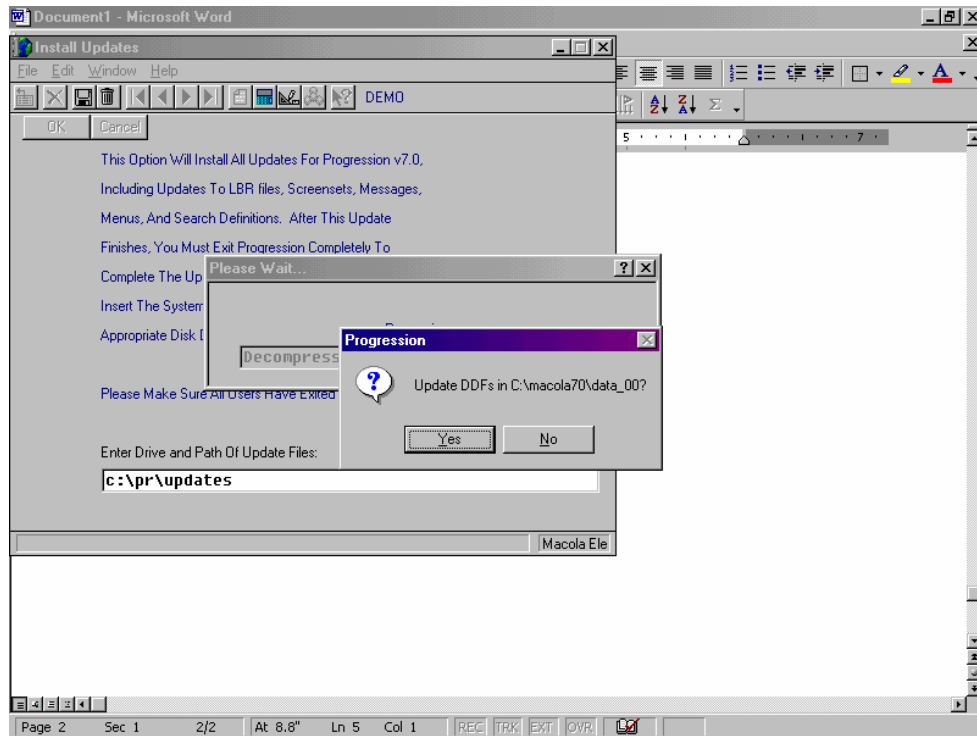
Enter Username(SUPERVISOR) and Password(SUPERVISOR) and click "OK".



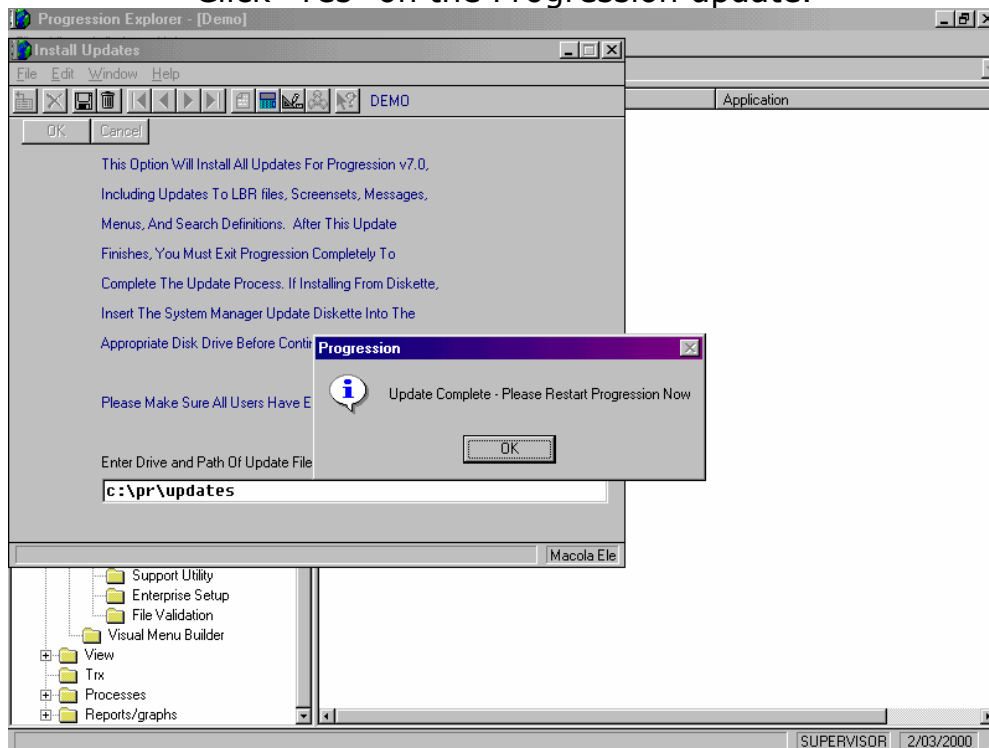
Go to System Manager, Maintain, System utilities, and Double Click on Install Updates.



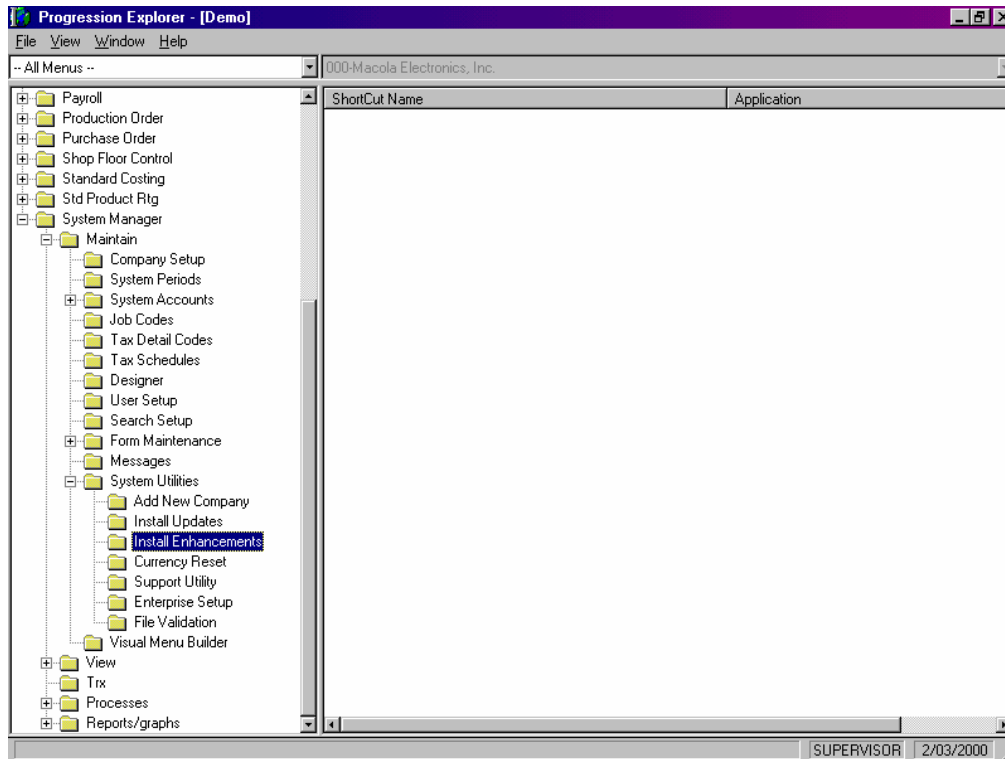
Type X:\updates(where X is the drive letter of your CD ROM Drive) and click "OK".



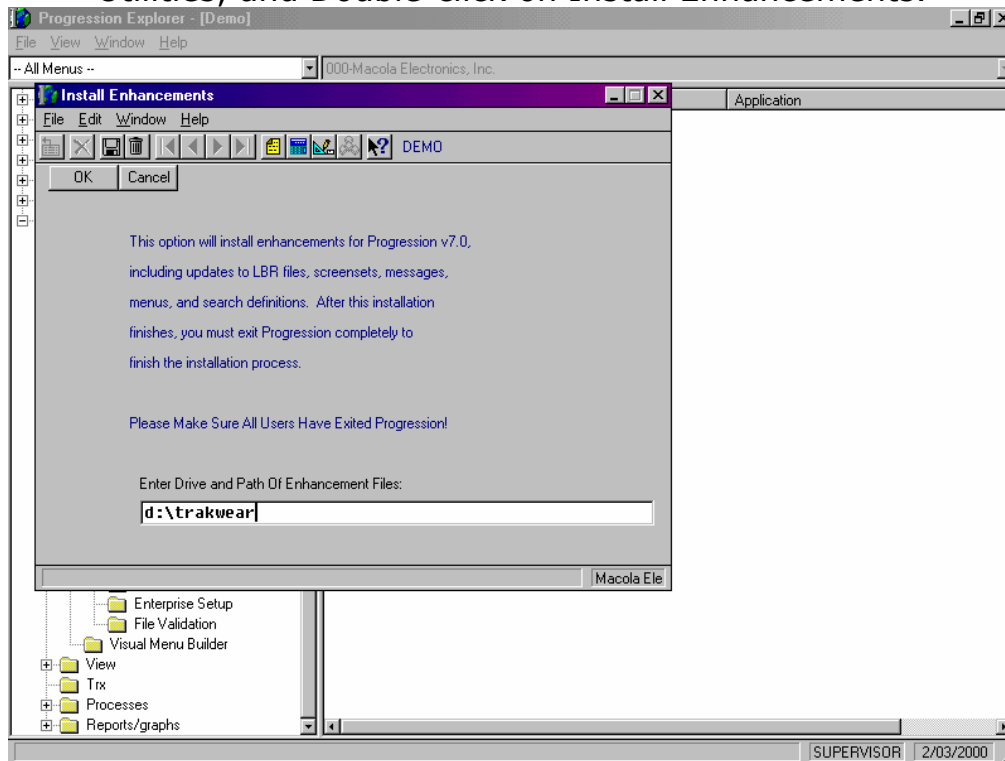
Click "Yes" on the Progression update.



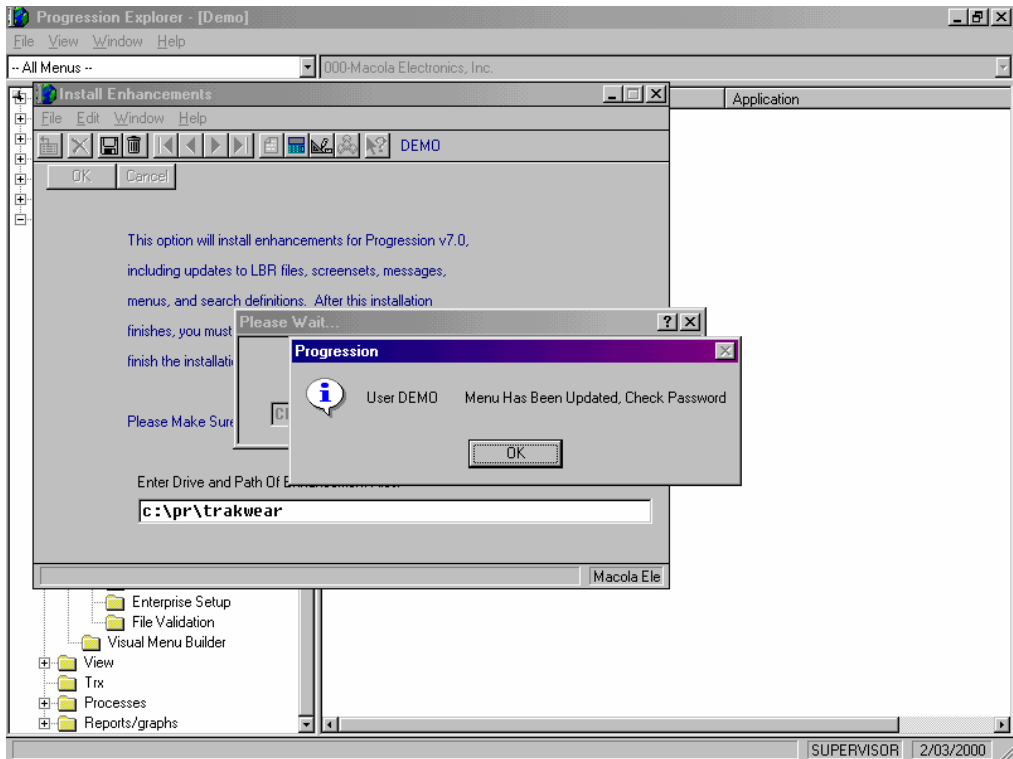
Click "OK" on the Update Complete screen.
Close Progression.



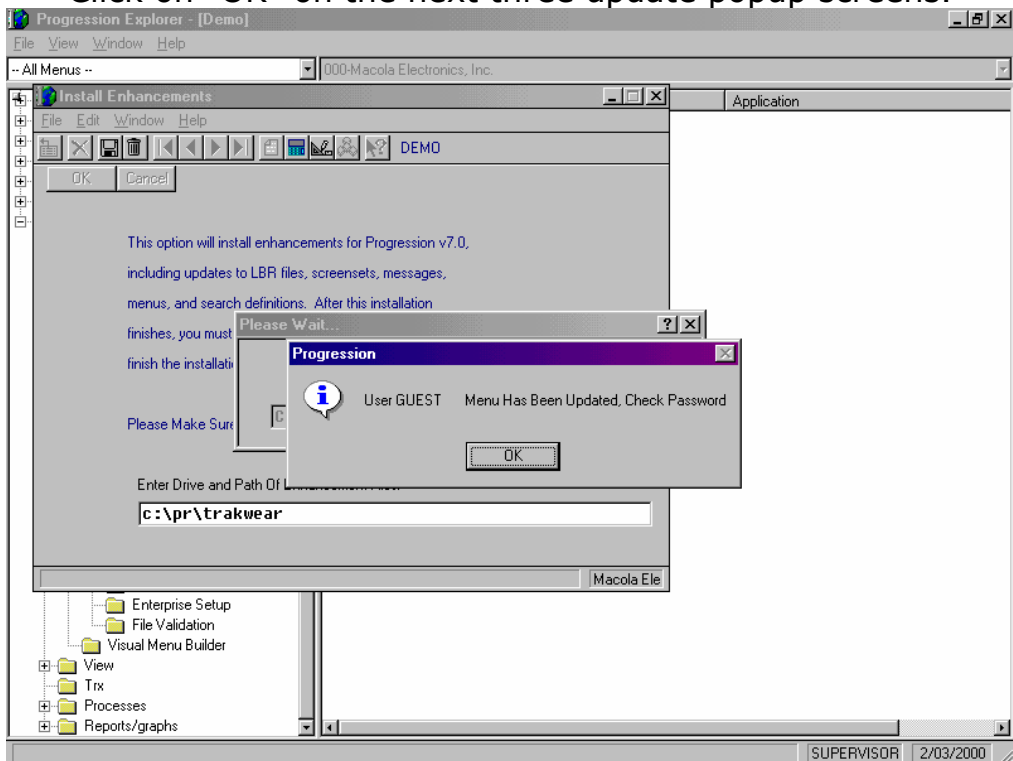
Restart Progression and go to System Manager, Maintain, System Utilities, and Double-click on Install Enhancements.

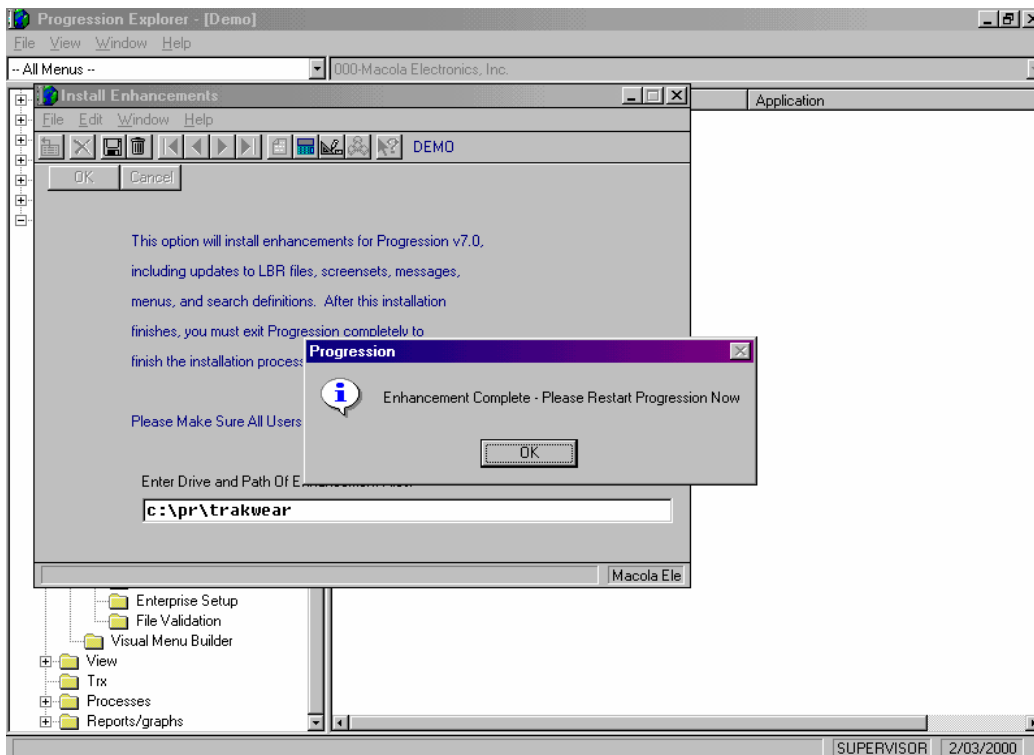
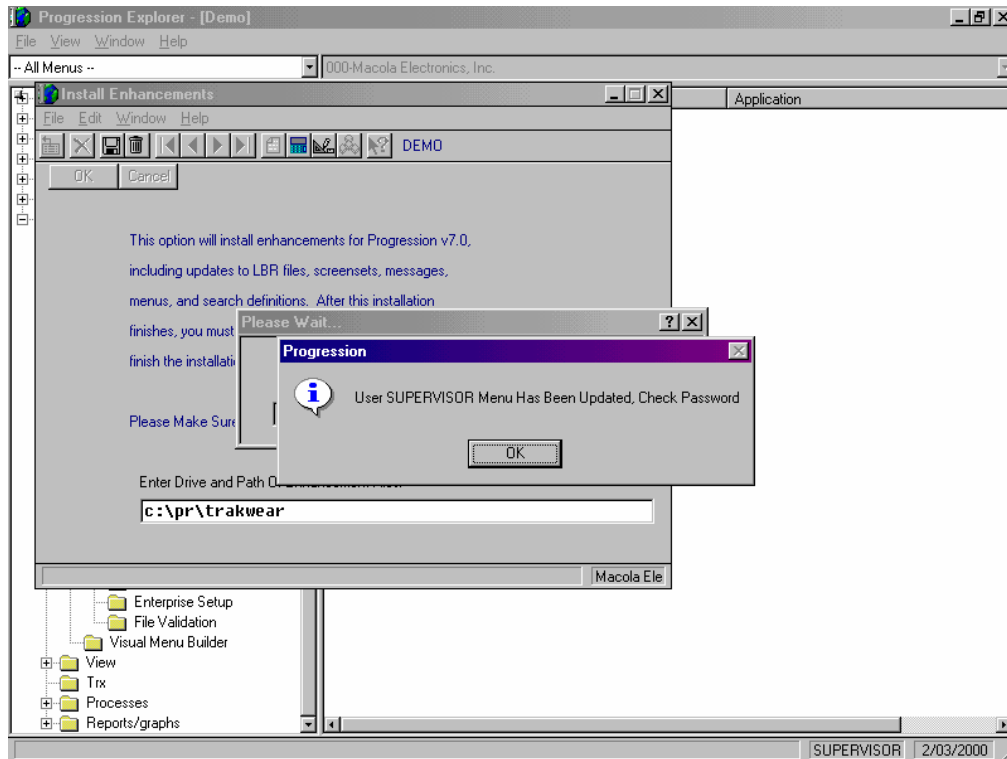


Type X:\TRAKWEAR and click "OK".
(Where X is the drive letter of your CD ROM drive)



Click on "OK" on the next three update popup screens.





Click on "OK" on the Enhancement Complete screen.
Close Progression.